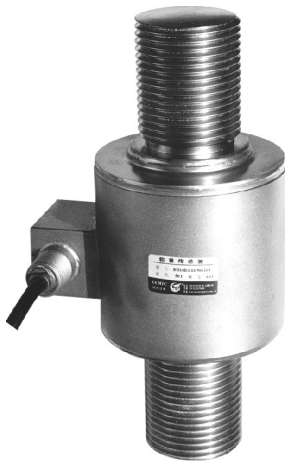


# BM14D



- BM14D load cells are available in the capacities 10t~100t.
- Stainless steel construction, hermetically welded, oil proof, waterproof, anti-corrosive gas and medium making it lightning protected in all kinds of environments.
- Column structure, anti-reversal design, good self-aligning ability, suitable for electronic platform scales, automobile testing facilities, hopper scales and other electronic weighing devices and force measuring fields.

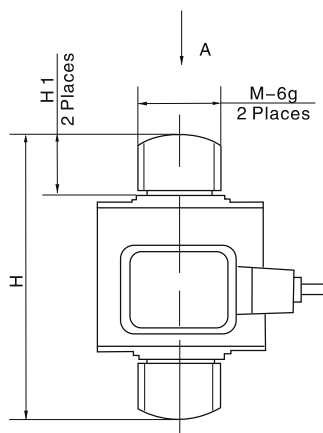
### Features

- Capacity 10t~100t
- High accuracy
- Stainless steel construction
- Easy installation and reliable performance

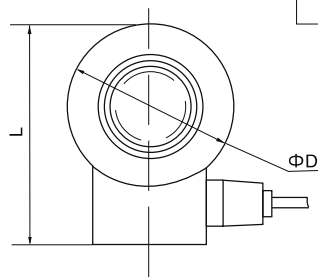


Specifications					
Capacity	t	10/20/25/30/40/50/100			
Accuracy		C2	C3	A5S	A5M
Maximum number of verification intervals	n <sub>max</sub>	2000	3000	5000	5000
Minimum load cell verification interval	v <sub>min</sub>	E <sub>max</sub> /5000	E <sub>max</sub> /10000	E <sub>max</sub> /15000	E <sub>max</sub> /15000
Combined error	(%FS)	≤ ±0.030	≤ ±0.020	≤ ±0.018	≤ ±0.026
Creep	(%FS/30min)	≤ ±0.024	≤ ±0.016	≤ ±0.012	≤ ±0.017
Temperature effect on sensitivity	(%FS/10°C)	≤ ±0.017	≤ ±0.011	≤ ±0.009	≤ ±0.013
Temperature effect on zero	(%FS/10°C)	≤ ±0.023	≤ ±0.015	≤ ±0.010	≤ ±0.014
Output sensitivity	(mv/v)	1.5±0.003			
Input resistance	(Ω)	700±7			
Output resistance	(Ω)	703±4			
Insulation resistance	(MΩ)	≥5000(50VDC)			
Zero balance	(%FS)	1.0			
Temperature, compensated	(°C)	-10~+40			
Temperature, operating	(°C)	-35~+65			
Excitation, recommended	(V)	5~12(DC)			
Excitation, max	(V)	18(DC)			
Safe overload	(%FS)	150			
Ultimate overload	(%FS)	300			

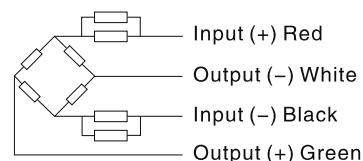
### Outline Dimension mm(inch)



A View



Dimension Capacity	H	H1	ΦD	L	M
10t ~ 20t	180 (7.08)	69.3 (2.73)	73 (2.87)	99.7 (3.92)	M36×3
25t ~ 30t	200 (7.87)	70 (2.75)	88.9 (3.5)	115.6 (4.55)	M42×3
40t ~ 60t	250 (9.84)	99.3 (3.91)	105 (4.13)	138.3 (5.44)	M56×4
100t	350 (13.7)	131.9 (5.19)	152.4 (4.93)	183.9 (7.14)	M76×4



### Wiring:

Adopt shielded, 4 conductor cable: φ5mm  
Standard cable length: 20m