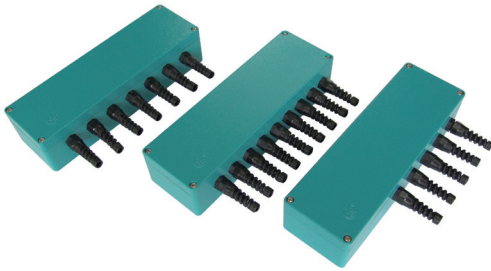


Junction Box

JB01



Features

- Cast aluminum, plastic-sprayed
- Easy to assembly and calibrate, high reliability
- Fully encapsulated, water-proof and moisture proof
- Sensitivity matched adjusting methods
- Operating temperature: $-40^{\circ}\text{C} \sim +85^{\circ}\text{C}$

Optional table

Part number	Channels
JB01-2	2
JB01-3	3
JB01-4	4
JB01-6	6
JB01-8	8

Description

- Specially designed for scales
- This model are available to connect 2 to 8 load cells with 4-wire or 6-wire cable on different requests.

Dimensions in mm

