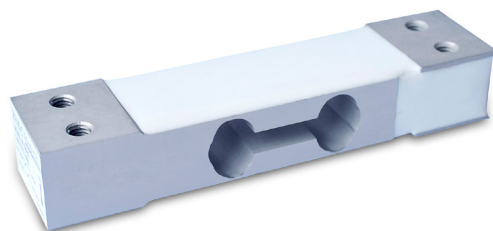


1P-350-G



Specifications

CAPACITY	3kg、5kg、6kg、8kg、10kg、12kg、20kg、35kg、40kg
COMPREHENSIVE ERROR	0.02
OUTPUT SENSITIVITY	$2.0 \pm 0.2\text{mV/V}$
NONLINEARITY	$\pm 0.02\%$ F.S.
REPEATABILITY	$\pm 0.02\%$ F.S..
HYSTERESIS	$\pm 0.03\%$ F.S.
CREEP	$\pm 0.02\%$ F.S.30min
TEMP. EFFECT ON ZERO	$\pm 0.1\%$ F.S./ 10°C
TEMP. EFFECT ON OUTPUT	$\pm 0.02\%$ F.S./ 10°C
ZERO OUTPUT	$\pm 2\%$ F.S.
INPUT RESISTANCE	$405 \pm 10\Omega$
OUTPUT RESISTANCE	$350 \pm 10\Omega$
INSULATION RESISTANCE	$\geq 3000\text{ M}\Omega$ (50V)
EXCITATION VOLTAGE	$\leq 10\text{V}$
OPERATION TEMP. RANGE	$-10 \sim +40^{\circ}\text{C}$
OVERLOAD CAPACITY	150% F.S.
RECOMMENDED USE	PLATFORM SCALES、PRICE COMPUTING SCALES

Dimensions mm (inch)

