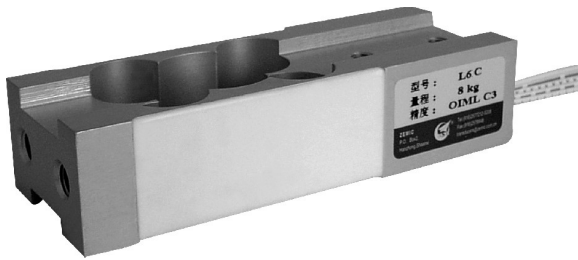


# L6C



- L6C load cells are available in the capacities 3kg~50kg.
- Aluminum construction with parallel beam.
- Silicon adhesive sealed, surface anodized and anti-corrosion.
- Integral structure and easy installation.
- Suitable for pricing scale, counting scale, electronic balance and other electronic weighing devices.

### Features

- Capacity: 3kg~50kg
- High accuracy
- Max. platform size: 450×450mm
- Installed screw request M8, 8.8 class, with oiled screw, torque 25Nm.



Specifications				
Capacity	kg	3/5/8/20/30/50		
Accuracy		C3D	C3	C3G
Approvals			OIML R60 C3	
Maximum number of verification intervals	n <sub>max</sub>	2500	3000	4000
Minimum load cell verification interval	v <sub>min</sub>	E <sub>max</sub> /5000	E <sub>max</sub> /7000	E <sub>max</sub> /11000
Combined error	(%FS)	≤ ± 0.030	≤ ± 0.020	≤ ± 0.015
Creep	(%FS/30min)	≤ ± 0.020	≤ ± 0.0167	≤ ± 0.0125
Temperature effect on sensitivity	(%FS/10°C)	≤ ± 0.021	≤ ± 0.0175	≤ ± 0.0131
Temperature effect on zero	(%FS/10°C)	≤ ± 0.028	≤ ± 0.020	≤ ± 0.0127
Output sensitivity	(mv/v)	1.9 ± 0.2		
Input resistance	(Ω)	409 ± 6		
Output resistance	(Ω)	350 ± 3		
Insulation resistance	(MΩ)	≥ 5000(50VDC)		
Zero balance	(%FS)	2		
Temperature, compensated	(°C)	-10 ~ +40		
Temperature, operating	(°C)	-35 ~ +65		
Excitation, recommended	(V)	5 ~ 12(DC)		
Excitation, max	(V)	18(DC)		
Safe overload	(%FS)	150		
Ultimate overload	(%FS)	300		
Corner correction		0.02%load value/100mm		

**Outline Dimension mm(inch)**

2-M8-6H Through      Limiting plate

45(1.77)

26(1.02)      9(0.35)

125(4.92)

29(1.14)

24(0.94)

45(1.77)

2-M8 Depth 15(0.59)  
2 Places

Input (+)

Output (-)

Input (-)

Output (+)

Shield

**Wiring:**  
Adopt a shielded, 5 conductor ribbon cable.  
Cable length: 0.35 ± 0.05m  
The shield is connected to the element.