

# H9C



- H9C load cells are available in the capacities 5Klb~250Klb.
- Alloy steel construction, potted by adhesive inside, oil proof, waterproof, anti-corrosive gas and medium making it suitable for all kinds of environments.
- Dual shear beam, suitable for electronic truck scales, automobile testing facilities, track scales, tank scales and other electronic weighing devices.

### Features

- Capacity 5Klb~250Klb
- High accuracy
- Alloy steel construction, easy installation and reliable performance
- Low profile
- PTB Approval No:D09-07.07
- NTEP Certificates No:CC07-018

### Accessories

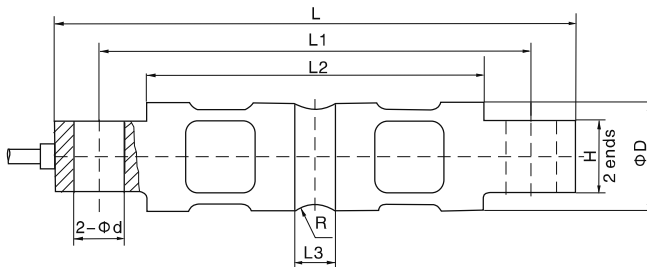
- HM-9-401 • BM-9-402



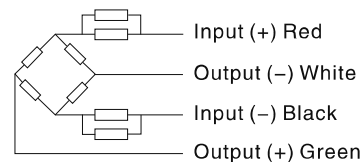
### Specifications

Capacity	Klb	5/10/20/30/40/50/60/75/100/150/200/250				
Accuracy		C2	C3	C4	A5M	B10M
Approvals			OIML R60 C3	OIML R60 C4	III 5000 Multiple	III L 10000 Multiple
Maximum number of verification intervals	n <sub>max</sub>	2000	3000	4000	5000	10000
Minimum load cell verification interval	v <sub>min</sub>	E <sub>max</sub> /5000	E <sub>max</sub> /10000	E <sub>max</sub> /14000	E <sub>max</sub> /15000	E <sub>max</sub> /10000
Combined error	(%FS)	≤ ±0.030	≤ ±0.020	≤ ±0.018	≤ ±0.026	≤ ±0.050
Creep	(%FS/30min)	≤ ±0.024	≤ ±0.016	≤ ±0.012	≤ ±0.017	≤ ±0.040
Temperature effect on sensitivity	(%FS/10°C)	≤ ±0.017	≤ ±0.011	≤ ±0.009	≤ ±0.013	≤ ±0.040
Temperature effect on zero	(%FS/10°C)	≤ ±0.023	≤ ±0.015	≤ ±0.010	≤ ±0.014	≤ ±0.020
Output sensitivity	(mv/v)	3.0±0.008				
Input resistance	(Ω)	700±7				
Output resistance	(Ω)	703±4				
Insulation resistance	(MΩ)	≥5000(50VDC)				
Zero balance	(%FS)	1.0				
Temperature, compensated	(°C)	-10~+40				
Temperature, operating	(°C)	-35~+65				
Excitation, recommended	(V)	5~12(DC)				
Excitation, max	(V)	18(DC)				
Safe overload	(%FS)	150				
Ultimate overload	(%FS)	300				

### Outline Dimension mm(inch)



Dimension	L	L1	L2	L3	ΦD	W	Φd	R
Capacity								
5 ~ 10	206.2 (8.12)	174.6 (6.88)	133.1 (5.24)	15.7 (0.62)	Φ43.2 (1.7)	28.4 (1.12)	Φ16.7 (0.66)	R12.7 (0.5)
15 ~ 20	206.2 (8.12)	174.6 (6.88)	133.1 (5.24)	21.3 (0.84)	Φ49.5 (1.95)	28.4 (1.12)	Φ16.7 (0.66)	R12.7 (0.5)
30 ~ 75	260.4 (10.25)	215.9 (8.5)	165.1 (6.5)	25.4 (1.0)	Φ76.2 (3.0)	60.2 (2.37)	Φ26.9 (1.06)	R25.4 (1.0)
90 ~ 100	285.8 (11.25)	241.3 (9.5)	190.2 (7.49)	31.0 (1.22)	Φ88.9 (3.5)	63.5 (2.5)	Φ26.9 (1.06)	R38.1 (1.5)
150	285.8 (11.25)	241.3 (9.5)	190.2 (7.49)	31.0 (1.22)	Φ99.1 (3.9)	71.1 (2.8)	Φ26.9 (1.06)	R38.1 (1.5)
200 ~ 250	408.9 (16.1)	330.3 (13.0)	254.0 (10.0)	31.7 (1.25)	Φ136.6 (5.38)	116.8 (4.6)	Φ39.6 (1.56)	R50.8 (2.0)



### Wiring:

Adopt shielded, 4 conductor cable.  
Cable diameter: Φ5mm(5K~20K),  
Φ8mm(30K~250K)  
Standard cable length: 9.3m