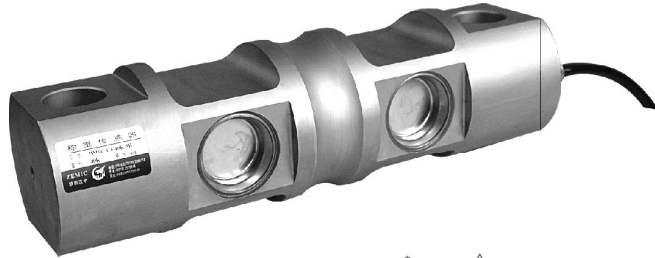


# HM9C



- HM9C load cells are available in the capacities 5Klb~250Klb.
- Alloy steel construction, hermetically sealed, oil proof, waterproof, anti-corrosive gas and medium making it suitable for all kinds of environments.
- Dual shear beam, suitable for electronic truck scales, automobile testing facilities, track scales and other electronic weighing devices.

### Features

- Capacity 5Klb~250Klb
- High accuracy
- Alloy steel construction
- Easy installation and reliable performance
- PTB Approval No: D09-06.46

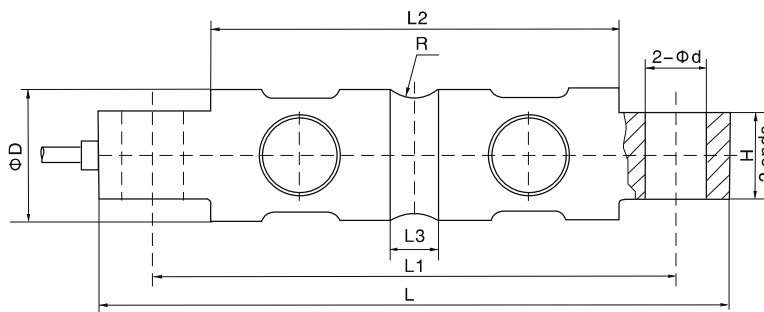
### Accessories

- HM-9-401 • BM-9-402

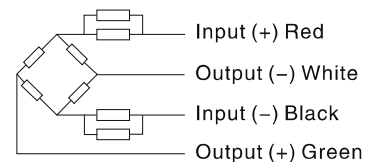
### Specifications

Capacity	Klb	5/10/15/20/30/40/50/60/75/90/100/150/200/250			
Accuracy		C2	C3	A5S	A5M
Approvals			OIML R60 C3		
Maximum number of verification intervals	$n_{max}$	2000	3000	5000	5000
Minimum load cell verification interval	$v_{min}$	$E_{max}/5000$	$E_{max}/10000$	$E_{max}/15000$	$E_{max}/15000$
Combined error	(%FS)	$\leq \pm 0.030$	$\leq \pm 0.020$	$\leq \pm 0.018$	$\leq \pm 0.026$
Creep	(%FS/30min)	$\leq \pm 0.024$	$\leq \pm 0.016$	$\leq \pm 0.012$	$\leq \pm 0.017$
Temperature effect on sensitivity	(%FS/10°C)	$\leq \pm 0.017$	$\leq \pm 0.011$	$\leq \pm 0.009$	$\leq \pm 0.013$
Temperature effect on zero	(%FS/10°C)	$\leq \pm 0.023$	$\leq \pm 0.015$	$\leq \pm 0.010$	$\leq \pm 0.014$
Output sensitivity	(mv/v)	3.0±0.008			
Input resistance	(Ω)	700±7			
Output resistance	(Ω)	703±4			
Insulation resistance	(MΩ)	≥5000(50VDC)			
Zero balance	(%FS)	1.0			
Temperature, compensated	(°C)	-10~+40			
Temperature, operating	(°C)	-35~+65			
Excitation, recommended	(V)	5~12(DC)			
Excitation, max	(V)	18(DC)			
Safe overload	(%FS)	150			
Ultimate overload	(%FS)	300			

### Outline Dimension mm(inch)



Dimension	L	L1	L2	L3	ΦD	Φd	H	R
Capacity								
5 ~ 10	206.2 (8.12)	174.6 (6.88)	133.1 (5.24)	15.7 (0.62)	Φ43.2 (1.7)	Φ16.7 (0.66)	28.4 (1.12)	R12.7 (0.5)
15 ~ 20	206.2 (8.12)	174.6 (6.88)	133.1 (5.24)	21.3 (0.84)	Φ49.5 (1.95)	Φ16.7 (0.66)	28.4 (1.12)	R12.7 (0.5)
30 ~ 75	260.0 (10.25)	215.9 (8.5)	165.1 (6.5)	25.4 (1.0)	Φ76.2 (3.0)	Φ26.9 (1.06)	60.2 (2.37)	R25.4 (1.0)
90 ~ 100	285.8 (11.25)	241.3 (9.5)	190.2 (7.49)	31.0 (1.22)	Φ88.9 (3.5)	Φ26.9 (1.06)	63.5 (2.5)	R38.1 (1.5)
150	285.8 (11.25)	241.3 (9.5)	190.2 (7.49)	31.0 (1.22)	Φ99.1 (3.9)	Φ26.9 (1.06)	71.1 (2.8)	R38.1 (1.5)
200 ~ 250	408.9 (16.1)	330.3 (13.0)	254.0 (10.0)	31.7 (1.25)	Φ136.6 (5.38)	Φ39.6 (1.56)	116.8 (4.6)	R50.8 (2.0)



### Wiring:

Adopt shielded, 4 conductor cable.  
Cable diameter: Φ5mm(5K~20K),  
Φ8mm(30K~250K)  
Standard cable length: 9.3m