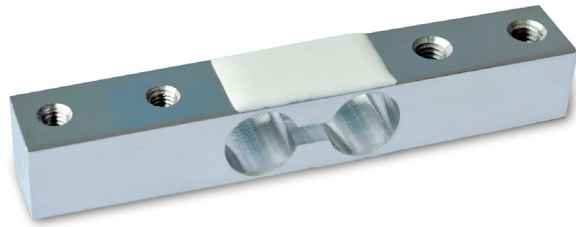


# 1F6-S



### Specifications

CAPACITY	2kg、3 kg、5kg、6kg
COMPREHENSIVE ERROR	0.05
OUTPUT SENSITIVITY	1.0 ± 0.1 mV/V
NONLINEARITY	± 0.05% F.S.
REPEATABILITY	± 0.05% F.S.
HYSTERESIS	± 0.05% F.S.
CREEP	± 0.05% F.S.5min
TEMP. EFFECT ON ZERO	± 0.3% F.S./10°C
TEMP. EFFECT ON OUTPUT	≤ +0.1% F.S./10°C
ZERO OUTPUT	± 0.2 mV/V
INPUT RESISTANCE	1050 ± 10 Ω
OUTPUT RESISTANCE	1000 ± 10 Ω
INSULATION RESISTANCE	≥ 2000 MΩ ( 50V )
EXCITATION VOLTAGE	≤ 10 V
OPERATION TEMP. RANGE	-10~+40°C
OVERLOAD CAPACITY	150% F.S.
RECOMMENDED USE	KITCHEN SCALES

### Dimensions mm ( inch)

