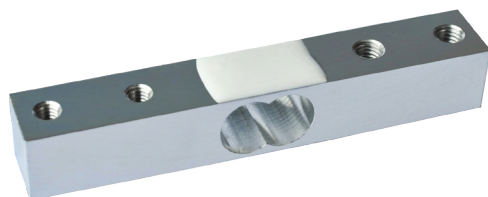


1R1-K



Specifications

CAPACITY	0.6kg	1kg	2kg、3kg、5kg、6kg
COMPREHENSIVE ERROR	0.03		
OUTPUT SENSITIVITY	1.0 mV/V	1.5 mV/V	1.2 mV/V
SENSITIVITY TOLERANCE	±0.15 mV/V		
NONLINEARITY	±0.03% F.S.		
REPEATABILITY	±0.03% F.S.		
HYSTERESIS	±0.03% F.S.		
CREEP	±0.03% F.S.5min	±0.3% F.S./10°C	
TEMP. EFFECT ON ZERO	±1.0% F.S./10°C		
TEMP. EFFECT ON OUTPUT	±0.03 F.S./10°C		
ZERO OUTPUT	±0.1mV/V		
INPUT RESISTANCE	1055 ± 10		
OUTPUT RESISTANCE	1000 ± 10		
INSULATION RESISTANCE	≥ 2000 MΩ (50V)		
EXCITATION VOLTAGE	≤ 10 V		
OPERATION TEMP. RANGE	-10~+40°C		
OVERLOAD CAPACITY	150% F.S.		
RECOMMENDED USE	KITCHEN SCALES		

Dimensions mm (inch)

