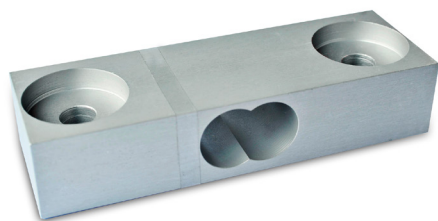


1T-JS



RoHS



Specifications

CAPACITY	150kg
COMPREHENSIVE ERROR	0.03
OUTPUT SENSITIVITY	2.0 ± 0.15 mV/V
NONLINEARITY	$\pm 0.03\%$ F.S.
REPEATABILITY	$\pm 0.03\%$ F.S.
HYSTERESIS	$\pm 0.03\%$ F.S.
CREEP	$\pm 0.03\%$ F.S.5min
TEMP. EFFECT ON ZERO	$\pm 0.2\%$ F.S./10°C
TEMP. EFFECT ON OUTPUT	$< +0.1\%$ F.S./10°C
ZERO OUTPUT	± 1.0 mV/V
INPUT RESISTANCE	1000~1300Ω
OUTPUT RESISTANCE	1000~1300Ω
INSULATION RESISTANCE	≥ 2000 MΩ (50V)
EXCITATION VOLTAGE	≤ 10 V
OPERATION TEMP. RANGE	-10~+40°C
OVERLOAD CAPACITY	150% F.S.
RECOMMENDED USE	PERSONAL SCALES

Dimensions mm (inch)

